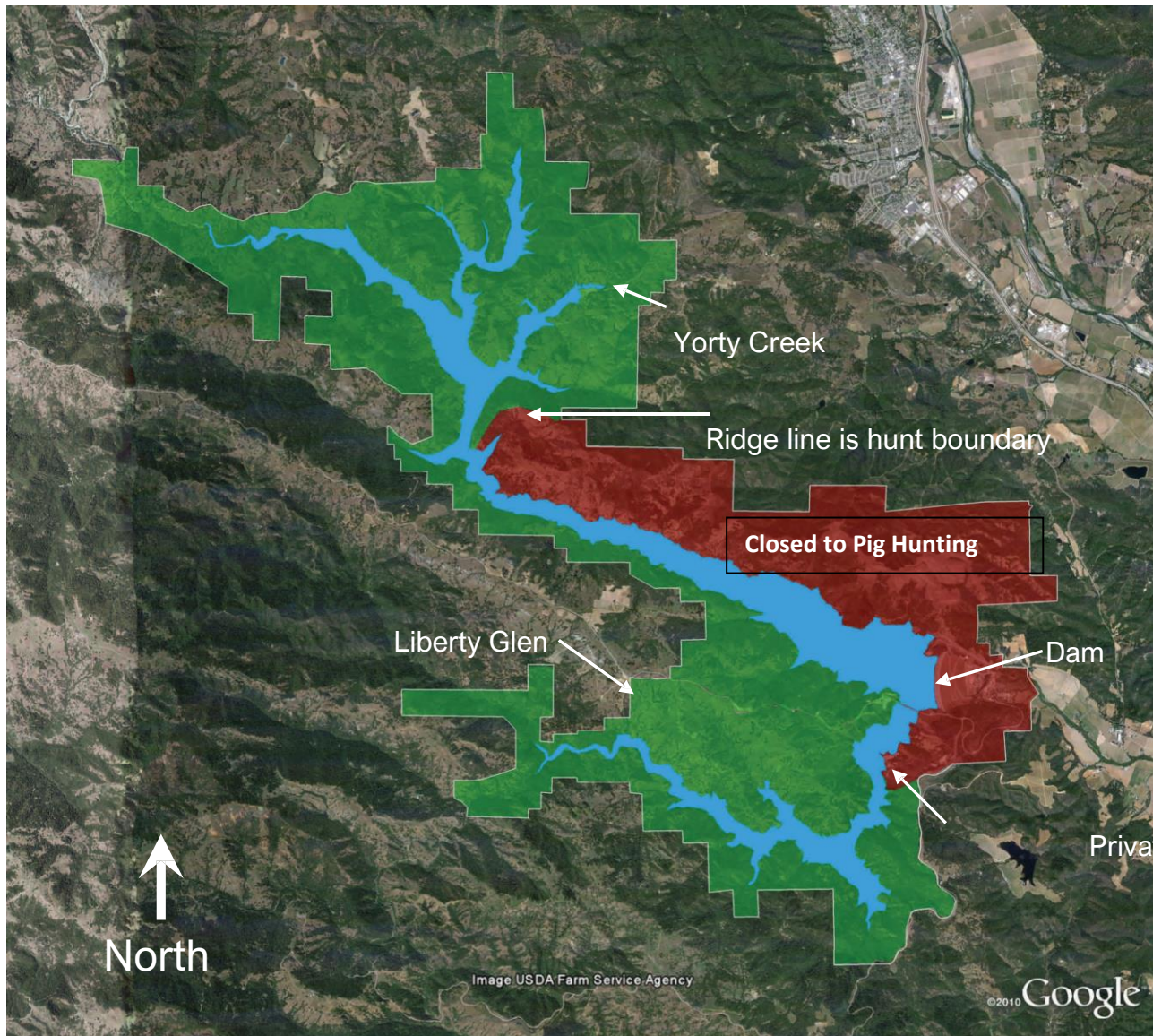


Lake Sonoma Archery Feral Pig Hunt Areas

November 9, 2019 - March 25, 2020



Hunters are responsible for following all Department of Fish and Game and Park regulations.

Lake Sonoma Archery and Crossbow Hunt Areas



1-888-334-2258

Respect private property ... when in doubt ... KEEP OUT!

See reverse for typical park boundary fencing and signage.



Areas open to pig hunting are shaded green



Areas closed to pig hunting are shaded red

Typical park boundary fence and markings



Note: Metal T post with hog wire topped with one strand of barbed wire and one strand of bare wire.

Army Corps of Engineers property boundary marker may be mounted on its own post or attached to the fence.



DO NOT GO BEYOND THESE MARKERS OR FENCES even if it looks like there is a road you can follow.



Example of legal parking on park access roads, all four tires must be to the right of the white fog lines and not blocking any gate or entrance road, even if gate is closed and locked.

The vehicle should not impede traffic in any way.



US Army Corps of Engineers®
San Francisco District